

START HERE!

READ ME FIRST

Don't be a hero and muscle through this installation without reading these fitting instructions first! Improper installation of this gear may void certain aspects of your warranty.

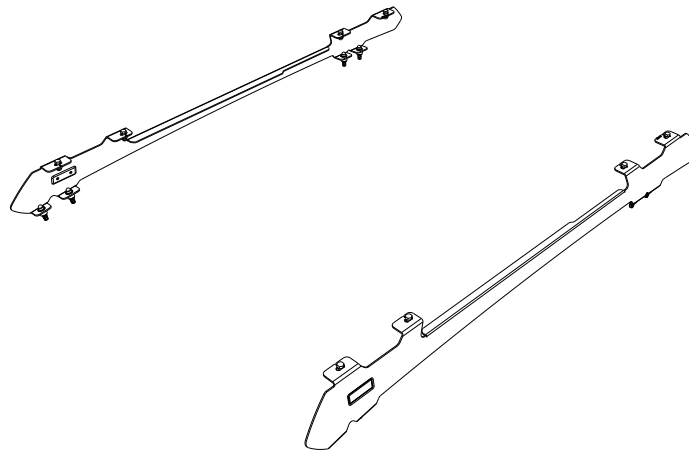
Before you begin, take a moment and open all your Front Runner rack kit boxes and gather the assembly instructions for the various components.

A complete kit will contain:

1. A Front Runner Mounting System specific to your vehicle
2. A Front Runner Rack Tray or Load Bar Slats

This document will guide you through the assembly of the mounting system and assist you in fitting the roof rack tray or load bars to your specific vehicle.

Please refer to the next page for a list of all the components, quantities and tools required.



IMPORTANT WARNING!

IT IS CRITICAL THAT ALL FRONT RUNNER PRODUCTS BE PROPERLY AND SECURELY ASSEMBLED AND ATTACHED TO YOUR VEHICLE. IMPROPER ATTACHMENT COULD RESULT IN AN AUTOMOBILE ACCIDENT, AND COULD CAUSE SERIOUS BODILY INJURY OR DEATH. YOU ARE RESPONSIBLE FOR ASSEMBLING AND SECURING ALL FRONT RUNNER PRODUCTS TO YOUR VEHICLE, CHECKING THE ATTACHMENTS PRIOR TO USE, AND PERIODICALLY INSPECTING THE PRODUCTS FOR ADJUSTMENT, WEAR AND DAMAGE. THEREFORE, YOU MUST READ AND UNDERSTAND ALL OF THE INSTRUCTIONS AND PRECAUTIONS SUPPLIED WITH YOUR FRONT RUNNER PRODUCT PRIOR TO INSTALLATION OR USE. IF YOU DO NOT UNDERSTAND ALL OF THE INSTRUCTIONS AND CAUTIONS, OR IF YOU HAVE NO MECHANICAL EXPERIENCE AND ARE NOT THOROUGHLY FAMILIAR WITH THE INSTALLATION PROCEDURES, YOU SHOULD HAVE THE PRODUCT INSTALLED BY A PROFESSIONAL INSTALLER OR OTHER QUALIFIED PERSONNEL.

NOTE: Front Runner will not be responsible for any damage caused by the failure to install the product according to these instructions.

Please call us if you have any questions about the installation of this product.

1

GET ORGANIZED

IN THE BOX

1	2 X	Foot Rail 1LH + 1RH
2	8 X	Large M6 Flat Washer
3	8 X	M6 x 35 Hex Head Bolt
4	8 X	M6 Nut Cap
5	8 X	M8 x 20 Hex Head Bolt
6	8 X	M8 Flat Washer
7	8 X	M8 Nyloc Nut
8	8 X	M8 Nut Cap
9	2 X	M6 x 30 Button Head Screw
10	1 X	M6 Jack Nut Tool
11	9 X	M6 Jack Nut
12	8 X	Spacer

TOOLS NEEDED

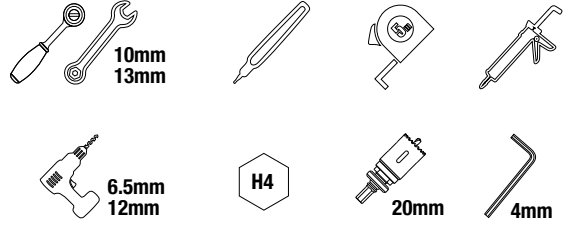
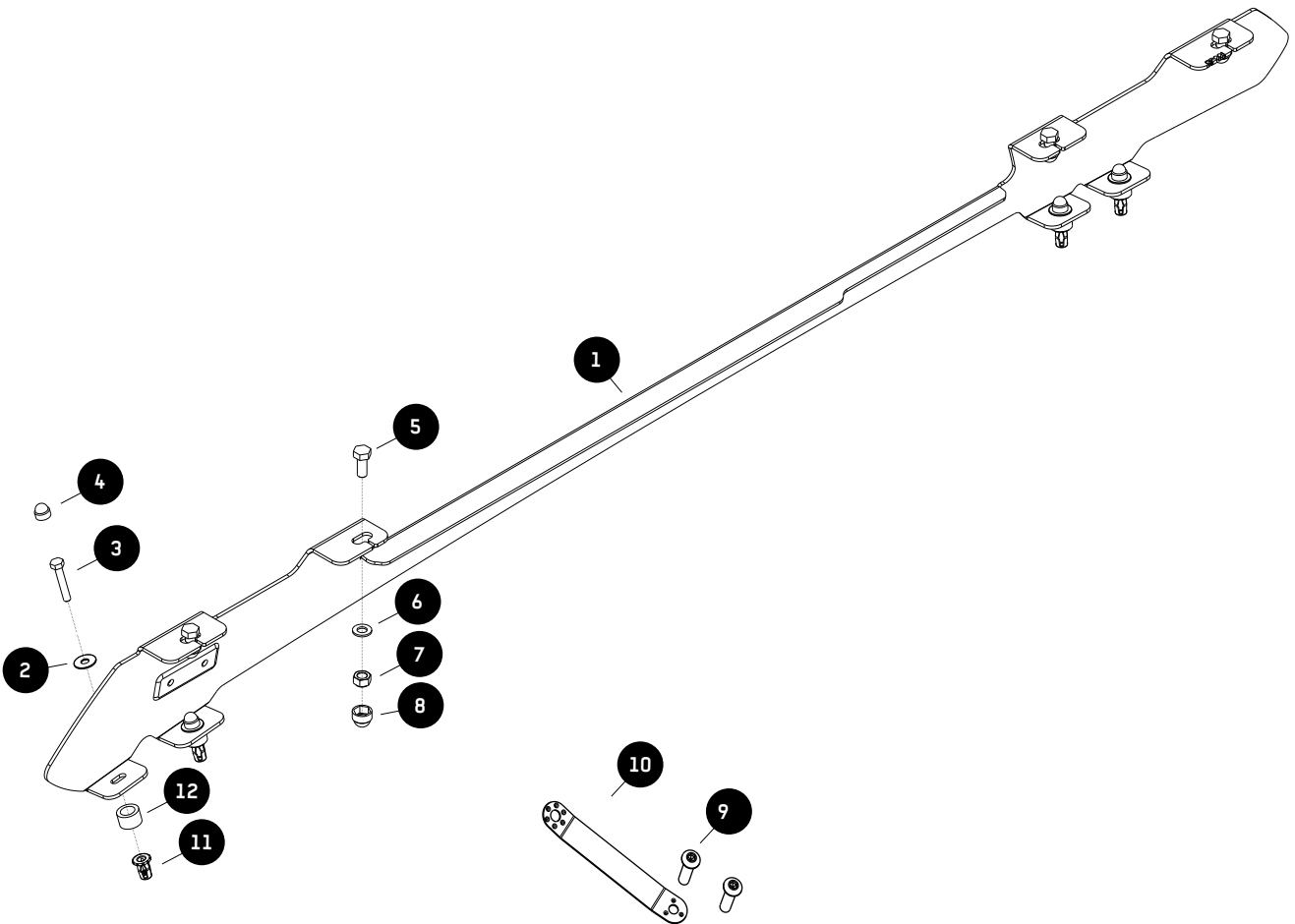
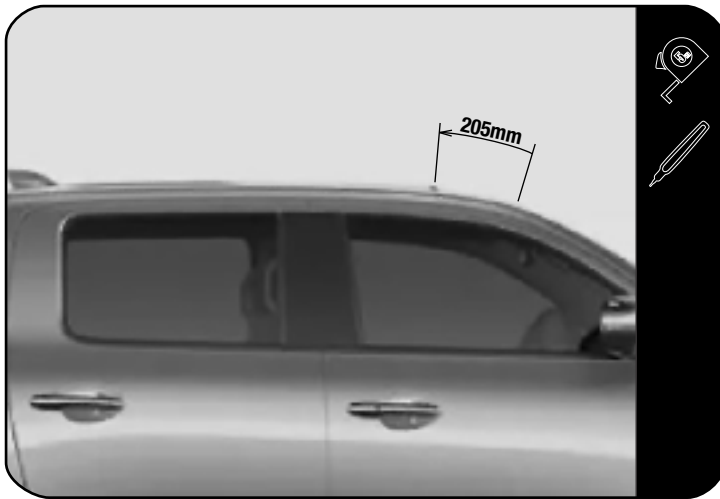


FIGURE 1.1



2.1



With the ditch moulding in place, mark the middle of the ditch moulding by measuring 205mm from the top edge of the windscreen shown in 2.3.

Place the Foot Rail (Item 1) on top of the ditch moulding. Centralize the first slot of the Foot Rail mounting foot with the mark.

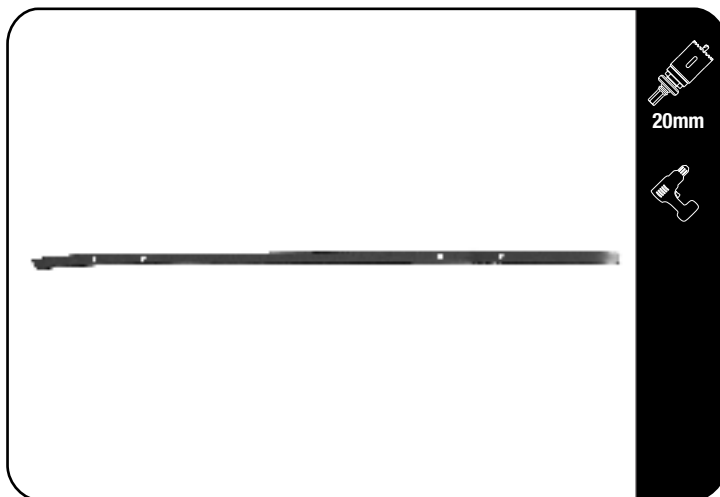
Mark the remaining slot centres and remove the Foot Rail.

Do this on both the left and right side of the vehicle.



Roof rails will need to be removed on certain models. after Roof rails have been removed you can proceed to step 2.6.

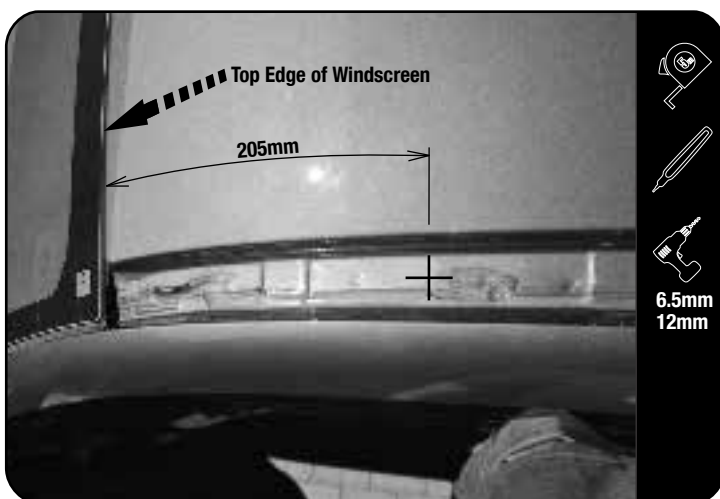
2.2



Unclip and remove the LH and RH ditch mouldings.

Using a 20mm Hole Saw, drill the centre of the ditch mouldings on the marks made in 2.1.

2.3



With the ditch mouldings removed, mark the middle of the ditch by measuring 205mm from the top edge of the windscreen.

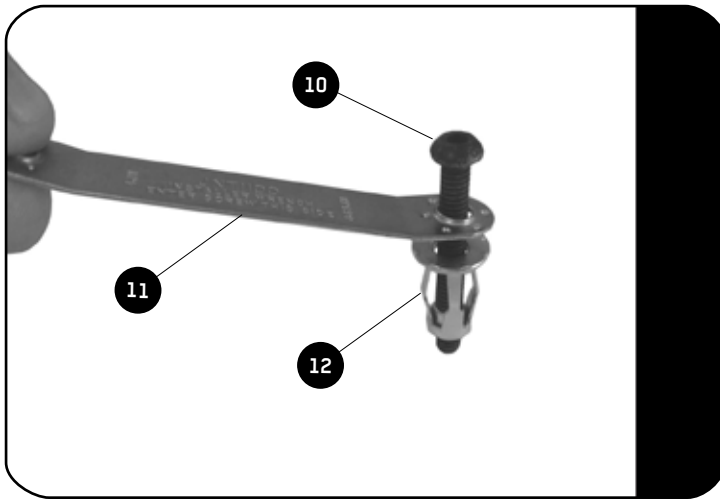
Place the Foot Rail (Item 1) inside the ditch. Centralize the first slot of the Foot rail mounting foot with the mark.

Mark the remaining slot centres and remove the Foot Rail.

Remove the Foot Rail from the vehicle. Drill a 6.5mm pilot hole in the center of the markings. Open the holes using a 12mm Drill.

Do this on both the left and right side of the vehicle.

2.4



Insert the M6 x 30 Button Head Screw (Item 10) into the one side of the Jack Nut Tool (Item 11). Loosely fit a Jack Nut (Item 12) to the M6 x 30 Button Head Screw as shown. Using the Jack Nut Tool and a M6 x 30 Button Head Screw, insert the M6 Jack Nuts into all 8 holes. Place the assembly into the hole drilled. Using a Battery Powered Screw Driver and a H4 Allen Key Bit, set the Jack Nut into the hole while holding onto the handle of the Jack Nut Tool.



Make sure the Jack Nut has pulled up all the way to the inside skin of the roof panel.

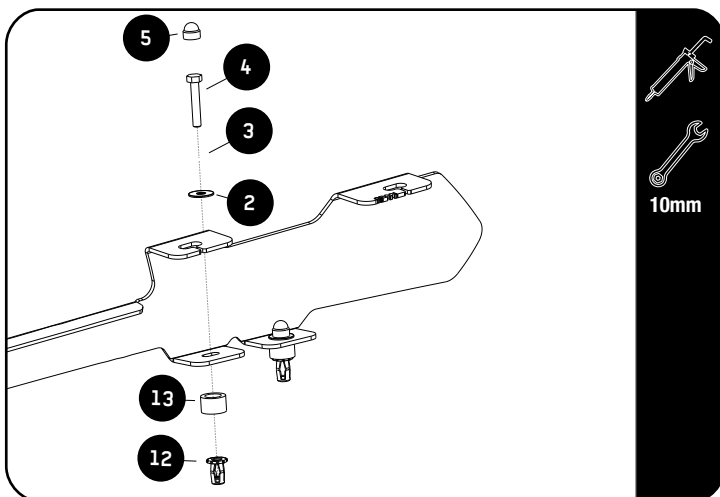
2.5



Place a bead of silicone around each of the Jack Nut openings inserted earlier in 2.4.

Fit the ditch mouldings cut in 2.2. Place the eight Spacers (Item 13) through the cut holes on top of the inserted Jack Nuts in 2.4 as shown.

2.6



Place the Foot Rail LH and RH (Item 1) on top of the Spacers (Item 13).

Place silicone on the threads of the M6 x 35 Hex Head Bolts (Item 4) and secure the Foot Rail. Using Large M6 Flat Washers (Item 2).

Do this on both the left and right side of the vehicle.

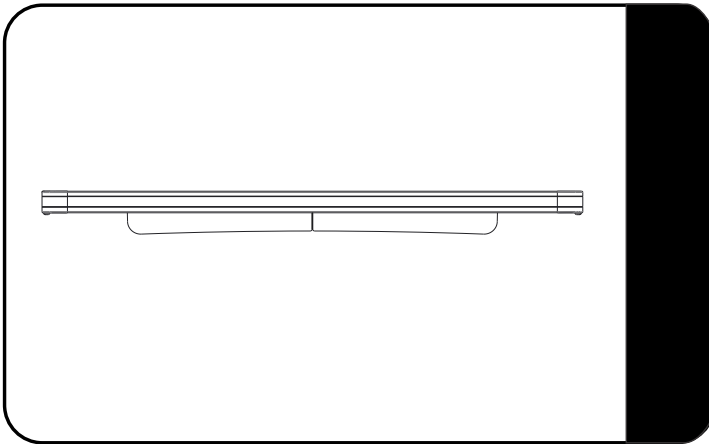
Finish off by placing M6 Nut Caps (Item 5) on the M6 x 35 Hex Head Bolts (Item 4).

To fit the Rack, proceed to Step 3.

3

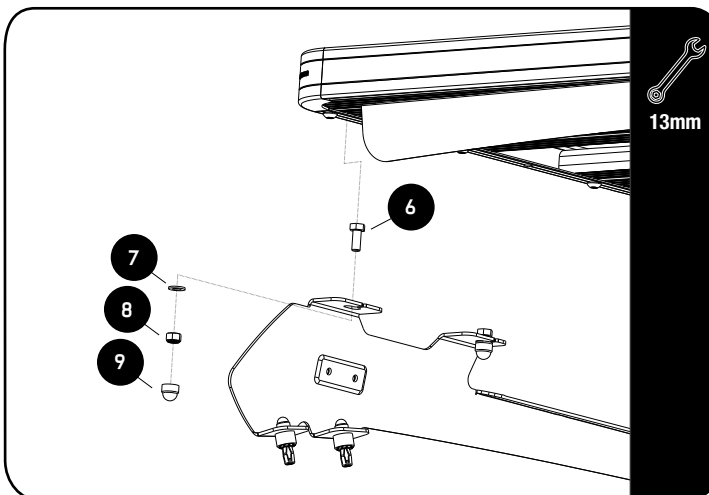
FIT AND SECURE

3.1



Make sure that the wind deflector is installed before you proceed to the next step.

3.2



Fit your Roof Rack to the Foot Rails using M8 x 20 Hex Head Bolts, M8 Flat Washers and M8 Nyloc Nuts (Items 6, 7 & 8) as shown.

3.3

Center the rack and tighten fully. Finish off by placing M8 Nut Caps (Item 9) over the M8 Nyloc Nuts (Item 8).



4

COMPLETION

4.1

Congratulations! You did it. Take a step back and admire your work!



5

INSTALL OTHER VEHICLE AND RACK ACCESSORIES

Now's the time to visit your favorite Front Runner Dealer in person or online.

IMPORTANT!

FRONT RUNNER RACK KITS OFTEN HAVE A HIGHER LOAD RATING THAN THE VEHICLES THEY ARE MOUNTED TO. PLEASE REFER TO YOUR SPECIFIC VEHICLE MANUFACTURER FOR A RECOMMENDED ROOF RATING. FRONT RUNNER CANNOT BE RESPONSIBLE FOR IMPROPER LOADING BEYOND THE VEHICLE MANUFACTURER'S STATED LOAD CAPACITY.

Be sure to tag us. We love to see our gear in action! #FrontRunnerOutfitters #BornToRoam

Share your adventures on: 