

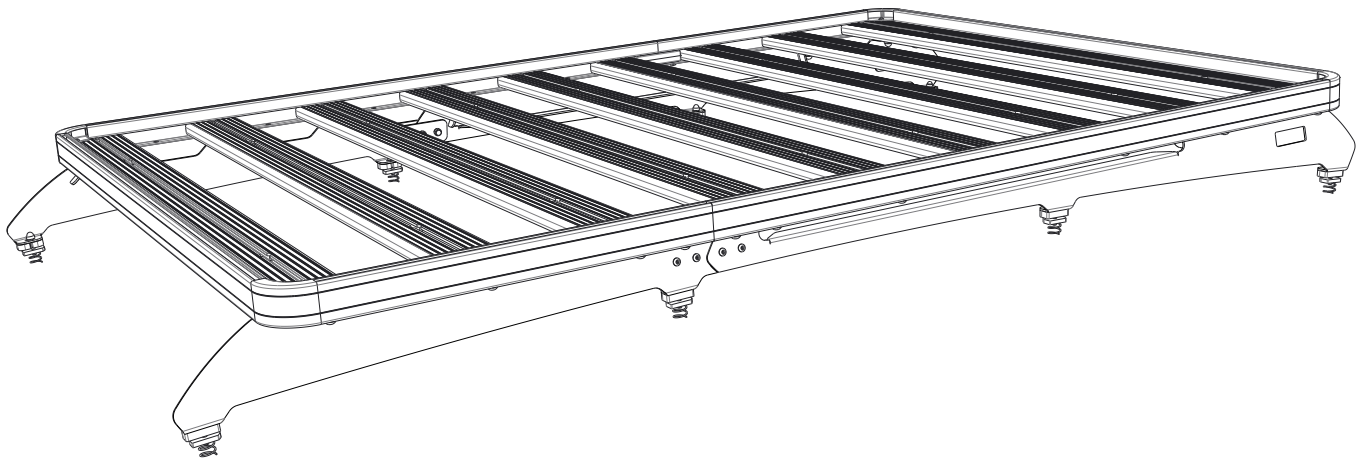


**FRONT RUNNER**  
VEHICLE OUTFITTERS

**FOOT RAIL**  
**FORD EVEREST (2015 - CURRENT)**

ENG

FAFE001



**READ ME !** 

IT IS CRITICAL THAT ALL FRONT RUNNER PRODUCTS BE PROPERLY AND SECURELY ASSEMBLED AND ATTACHED TO YOUR VEHICLE. IMPROPER ATTACHMENT COULD RESULT IN AN AUTOMOBILE ACCIDENT, AND COULD CAUSE SERIOUS BODILY INJURY OR DEATH. YOU ARE RESPONSIBLE FOR ASSEMBLING AND SECURING ALL FRONT RUNNER PRODUCTS TO YOUR VEHICLE, CHECKING THE ATTACHMENTS PRIOR TO USE, AND PERIODICALLY INSPECTING THE PRODUCTS FOR ADJUSTMENT, WEAR AND DAMAGE. THEREFORE, YOU MUST READ AND UNDERSTAND ALL OF THE INSTRUCTIONS AND PRECAUTIONS SUPPLIED WITH YOUR FRONT RUNNER PRODUCT PRIOR TO INSTALLATION OR USE. IF YOU DO NOT UNDERSTAND ALL OF THE INSTRUCTIONS AND CAUTIONS, OR IF YOU HAVE NO MECHANICAL EXPERIENCE AND ARE NOT THOROUGHLY FAMILIAR WITH THE INSTALLATION PROCEDURES, YOU SHOULD HAVE THE PRODUCT INSTALLED BY A PROFESSIONAL INSTALLER OR OTHER QUALIFIED PERSONNEL.

Thank you for purchasing a Front Runner Foot Rail.

Before you start, take a moment to familiarize yourself with the Fitting Instructions and the components received.

Refer to Page 2 for a list of all the components, quantities and tools required.

**NOTE:** Front Runner will not be responsible for any damage caused by the failure to install the product according to these instructions.  
Please call us if you have any questions about the installation of this product.

# 1

## GET ORGANIZED

Here is what you are looking at for FAFE001

### IN THE BOX

1	2 X	Foot Rail Rear- 1LH + 1RH
2	2 X	Foot Rail Front - 1LH + 1RH
3	8 X	M6 x 16 Button Head
4	8 X	M6 Nyloc Nut
5	16 X	M6 Nut cap
6	12 X	M8 x 20 Hex Bolt
7	12 X	M8 x 16 x 1.6 Flat washer
8	12 X	M8 Nyloc Nut
9	12 X	M8 Nut Cap
10	8 X	M6 x 30 Hex Bolt
11	8 X	M6 Spring Washer
12	8 X	M6 x 19 x 1 Flat Washer
13	2 X	Splice Plate

### IN THE BOX CONTINUED

14	8 X	Foot Spacer
15	8 X	M6 Channel Nut

### TOOLS NEEDED

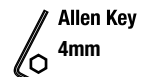
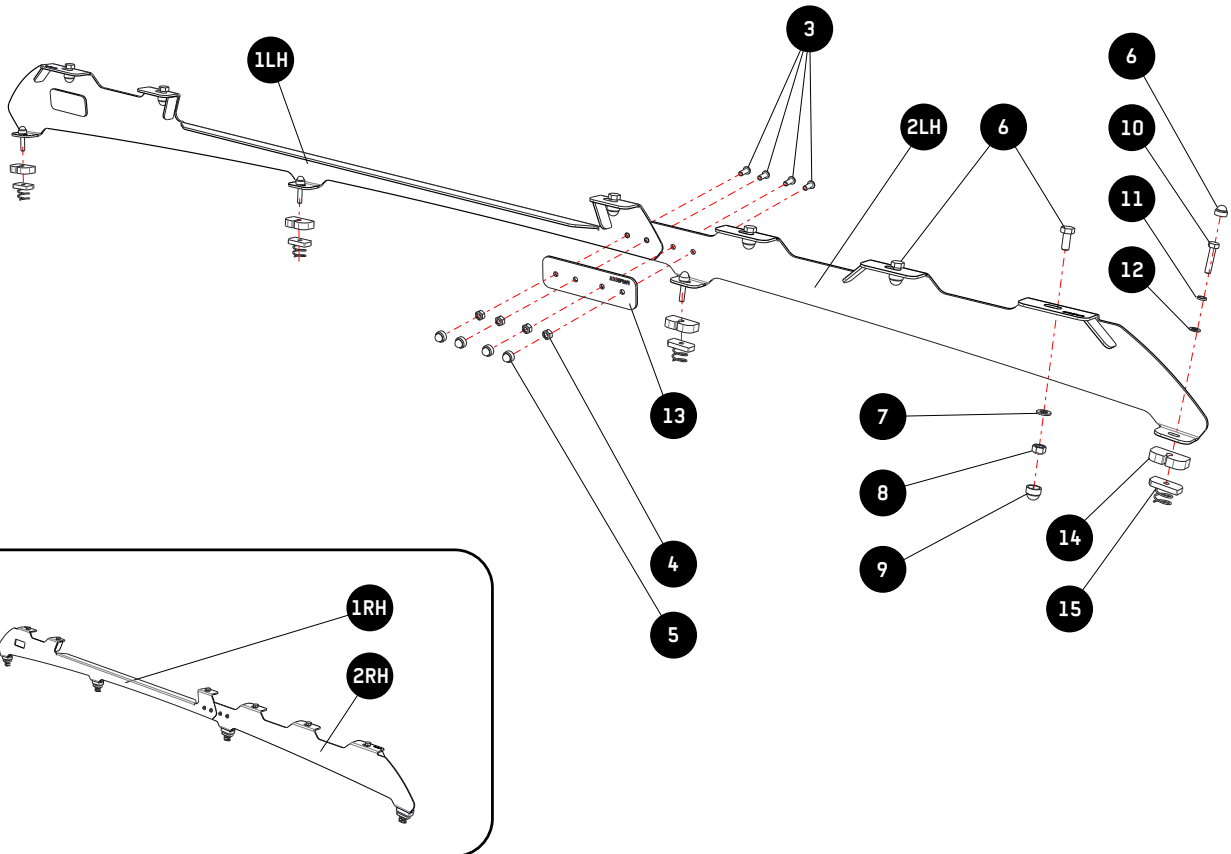
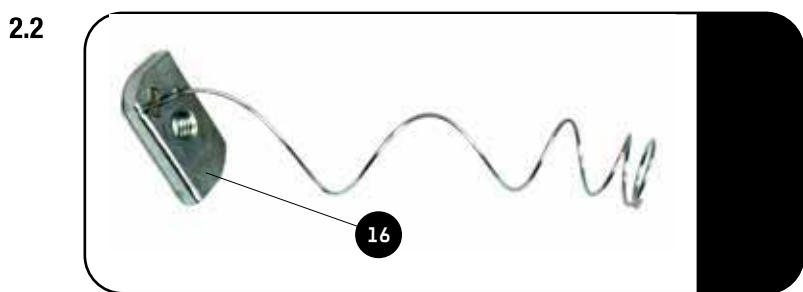


FIGURE 1.1




## 2 FIT AND SECURE

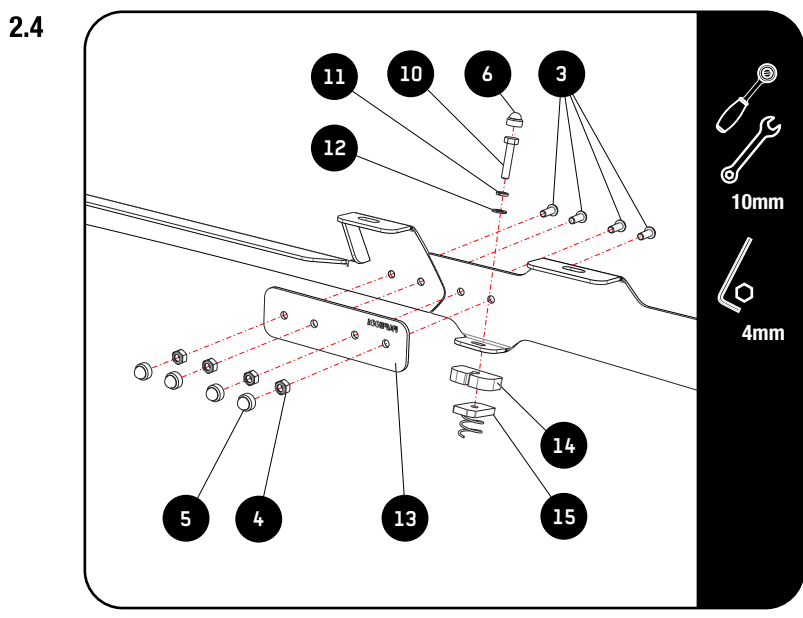
2.1 To achieve this installation you will need to remove the Interior roof lining and then the factory roof rails. 




 Prepare the Channel Nuts (item15) by stretching out the spring to use it as a handle.



 Place a bead of sealant in and over each hole in the roof, then place a spacer over each hole (item 14)

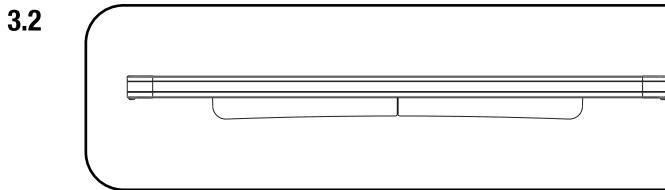



 Join the two halves of the foot rails with the supplied splice plate (item14). Fasten as shown with Items 4 & 3.  
Now place the assembled foot rail onto the spacers and fasten with items 10, 11, 12 & 15

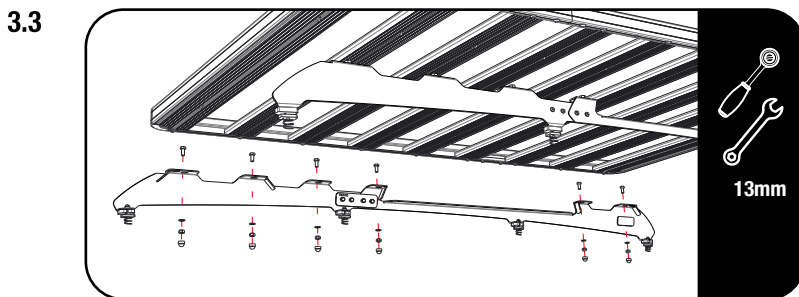
2.5 Tighten all the nuts and bolts securing the foot rails to the vehicle's roof. Place a M6 Nut Cap (Item 6) over each of the M6 Nuts and Hex Bolts. 

### 3 FIT AND SECURE

3.1 Refer to RRSUNI when assembling your Slimline II Tray.



 Make sure that the wind deflector is installed before you proceed to the next step



 Fit your roof rack to the foot rails with items 6, 7 & 8

3.4 Centre the rack and tighten fully. Use the supplied M8 nut caps (Items 10) to finish off the nuts.

### 4 COMPLETION



Congratulations. You did it. Take a step back and admire your work!

### 5 INSTALL OTHER VEHICLE AND RACK ACCESSORIES

Now's the time to visit your favorite Front Runner Dealer in person or Online.